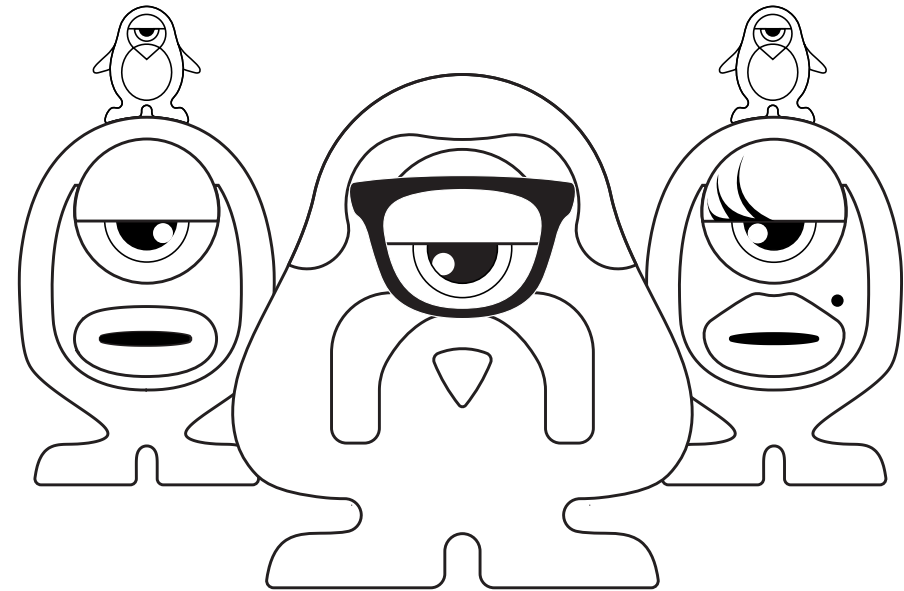


PSW+SRT

System 2.1



thevarios.com

info@thevarios.com

SYSTEM 2.1 PSW+SRT

Our extremely "high fidelity" family is rather trendy and fun...Conceived to live together under the magnetic and fatherly eye of Roy, the muscular and puffed-up moustached with a deep but controlled voice that shows the level of authority that every head of the family should have.In actual facts, Roy is the latest addition to the Vario family, an extremely compact passive subwoofer, with a belly featuring 2 x 6½" push-pull fitted loudspeakers that give astonishing results as far as intrinsic quality and depth are concerned.

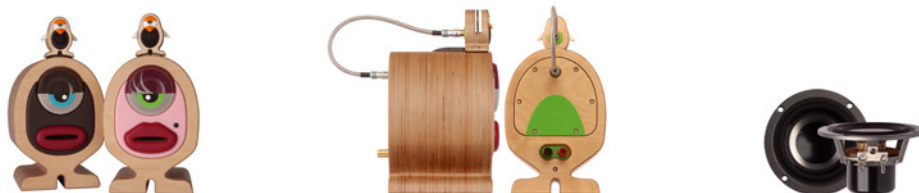


Let yourself be seduced by the deep and vibrant voice of our head of the family



Technical specifications

Colours	natural / ebony
Finish	glossy / matt
System	Two way Bass reflex
Applications	2.1 with ROY PSW HI-FI stereo - desktop audio video system
Amplifier requirement	20 - 50 watt RMS
Nominal impedance	8 Ohm
Frequency Response	100 - 20 KHz
Sensitivity	88.5 db (1w/1m)
Drive units	1 x 3" - 76 mm titanium cone 1 x " 1/4 - 19 mm soft dome tweeter
Weight	3.45 Kg. pcs
Dimensions	
Width	165 mm
Height	310 mm
Depth	195 mm





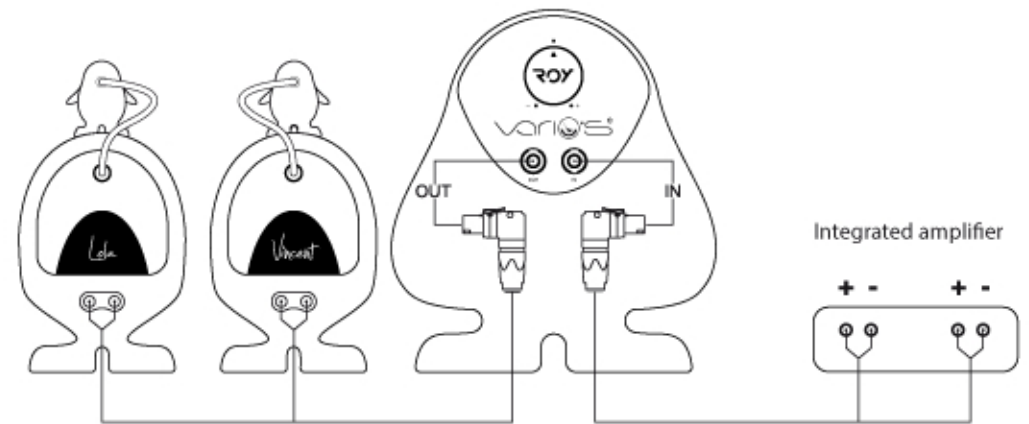
Technical specifications

Colours	natural / ebony
Finish	glossy / matt
System	Passive Subwoofer 4th order isobaric system
Applications	Hi-Fi stereo 2.1 with SRT model
Amplifier requirement	70 - 150 watt RMS
Nominal impedance	8 Ohm
Frequency Response	40 - 150 Hz
Sensitivity	86db (1w/1m)
Drive units	2 x 5" / 127 mm
Weight	15 Kg. pcs
Input/Output	2 x Neutrik NL4 FRX

Dimensions

Width	325 mm
Height	365 mm
Depth	245mm
Accessories	2 x Neutrik NL4 FRX + cable







www.thevarios.com

info@thevarios.com